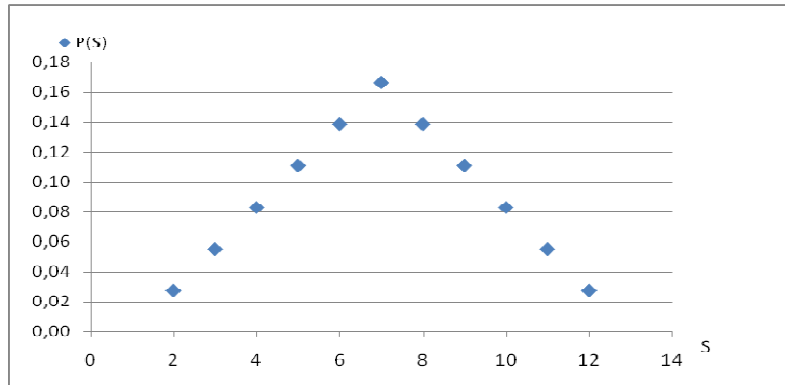


Gabarito da LISTA 4 – Probabilidades e Distribuições

- 6) a) sim, porque a soma das probabilidades dá 1.
 b) $30/36 = 0,8333 = 83,3\%$
 c) $33/36 = 0,9167 = 91,7\%$
 d) $\mu = E = 7,0$ e $\sigma = 2,4$
 e) ao lado



- 7) a) $1/5$ b) $24/125$

- 8) a) $60,0\%$ b) $16,7\%$

- 9) a) $15/16$ b) $7/8$ c) $3/8$

- 10) $0,3231$

- 11) $94,0\%$

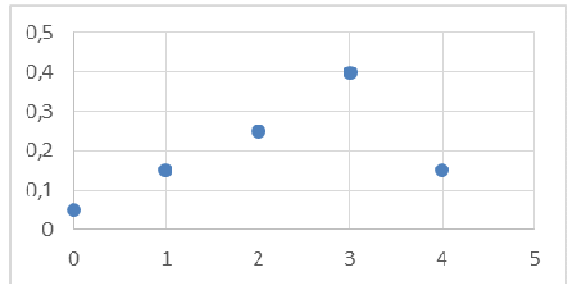
- 12) $60,0\%$

- 13) Trocar de porta $66,7\%$

- 14) a) =====>

- b) =====> c) $E = 2,4$ $\sigma^2 = 1,15$ ==>

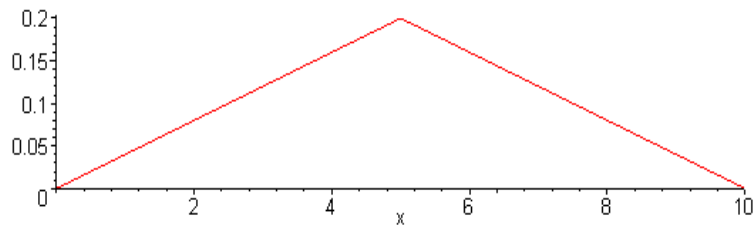
S	P(S)
0	0,05
1	0,15
2	0,25
3	0,4
4	0,15



- 15) a) $\mu = E = 6,0$
 b) $\sigma^2 = 4,50$
 c) $\sigma = 2,1$

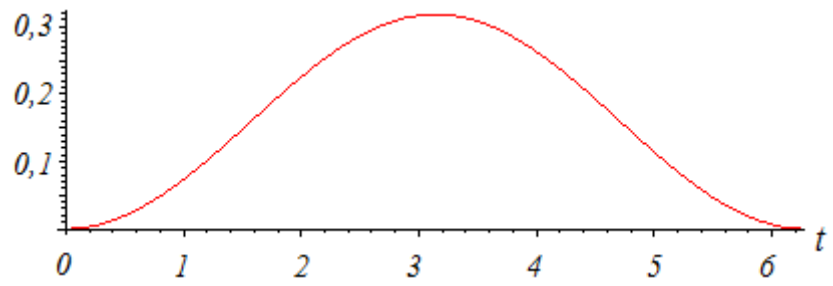
- 16) a) $\mu = E = 2,4$
 b) $\sigma^2 = 2,05$
 c) $\sigma = 1,4$

- 17) $\sigma^2 = 4,17$
 $P(x < 8) = 0,9200$



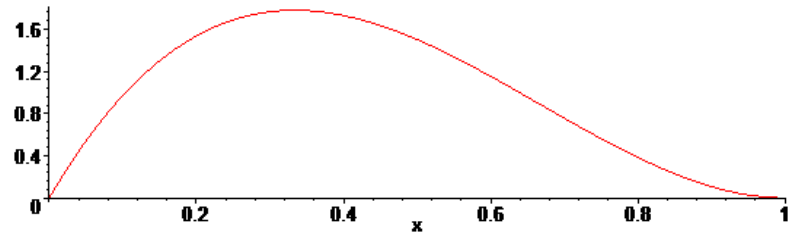
18) $a = \frac{1}{2\pi}$

$P(x > 2) = 0,8264$



19) $m = 12$

$\sigma = 0,20$



20) $f(x) = 3x(10-x)/500$